

FIELD COPY

**COUNTY OF LOS ANGELES
ROAD DEPARTMENT**

**PRECISE
BENCH MARK LIST**



**ARCADIA QUAD
1965 ADJUSTMENT**

FIELD COPY

PREFACE

The Road Department level net is composed of more than 1,000 miles of levels supporting in excess of 10,000 bench marks. In 1964-65, a major readjustment of the net was undertaken. To emphasize the complete break with previous elevations, the SY, SG & SL series bench marks have been re-labeled BY, BG & BL, respectively.

To facilitate the adjustment, indexing, and distribution of adjusted values of the net, the County territory was divided into 31 quads or areas. For identification purposes each quad was given a name, viz., "Rosemead," "La Mirada," "Santa Fe," etc. When bench marks and elevations in the Road Department net are used, the name of the quad in which the bench mark is located and the date of the adjustment of the elevation must be included in the bench mark description, e.g.,

BG 1887 --L+BN IN CONC HDWL OF DRAIN PIPE UNDER DR 218 FT
NE +18 FT SE C/L INT SAN JOSE HILLS RD +CAMERON AVE MKD (BM)
(COVINA --1965) ELEV. 696.238

It is expected that this general adjustment will, for the most part, remain sound for the next 8 to 12 years. As new circuits are completed, however, re-adjustment of individual quads may become advisable. It is expected that these subsequent adjustments will be in the nature of a few hundredths of a foot. When a quad is re-adjusted, new elevation lists will be published and the date of the re-adjustment will replace the "1965" at the end of the bench mark description. Two bench marks in the same quad with different adjustment dates will not normally join each other. Since all adjustments taper out to nothing at the periphery of the quad, any bench mark in one quad will join any bench mark in another quad regardless of their respective adjustment dates.

The basic accuracy of the net is reflected by an indicated field probable error of plus or minus 0.012 foot per mile of leveling as determined from 298 conditions of closure. However, many years experience in vertical control in the greater Los Angeles basin and Antelope Valley indicate that because of varying degrees of subsidence and heaving, the true datum is recovered only by obtaining substantial agreement of a number of bench marks.

The users of this net are invited to assist in its maintenance by notifying this Department of cases of obliteration, apparent mistakes in descriptions or elevations, and proven disturbance of bench marks.

DATUM: U. S. Coast and Geodetic Survey Sea Level Datum
of 1929, through the medium of the Los Angeles
County Engineer Precise Level Net, 1963 Adjust-
ment.

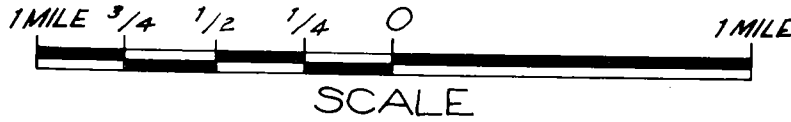
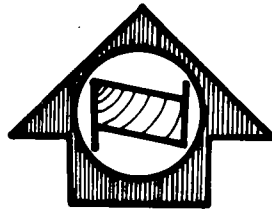
Abbreviations Used in Bench Mark Listings

ABUT--Abutment	L+BN--Lead and Bench Mark Nail
ANG PT--Angle Point	L+BR--Lead and Brad
BC--Beginning of Curve	L+N--Lead and Nail
BCR--Beginning of Curb Return	L+PK--Lead and PK Nail
BLDG--Building	L+SPK--Lead and Spike
BT SPK--Boat or Bolt Spike	L+T--Lead and Tack
CB RET--Curb Return	MCR--Middle of Curb Return
C/L INT--Center Line Intersection	MKD--Marked
C/L PROD--Center Line Produced	NR--Near
COE--Corps of Engineers	OPP--Opposite
CONC--Concrete	PI--Point of Intersection
CS MON--County Surveyor Monument	PK+W--PK Nail and Washer
CS BR CAP--County Surveyor Brass Cap Monument	P/L--Property Line
CT SPK--Cut Spike	P O S T--Point on Semi-tangent
CTR--Center	PP--Power Pole
DN--Down	PVMT--Pavement
DR--Driveway	R D--Road Department
EC--End of Curve	RDBM--Road Department Bench Mark
ENT--Entrance	RR--Railroad
FC--Flood Control (Dept. LA County)	SPK T+W--Spike, Tin and Washer
FTG--Footing	USC+GS--United States Coast and Geodetic Survey
HDWL--Headwall	USGS--United States Geological Survey
HSE--House	WK--Walk
IP--Iron Pipe	±--Plus or Minus
LACE--Los Angeles City Engineer	+--And

QUAD

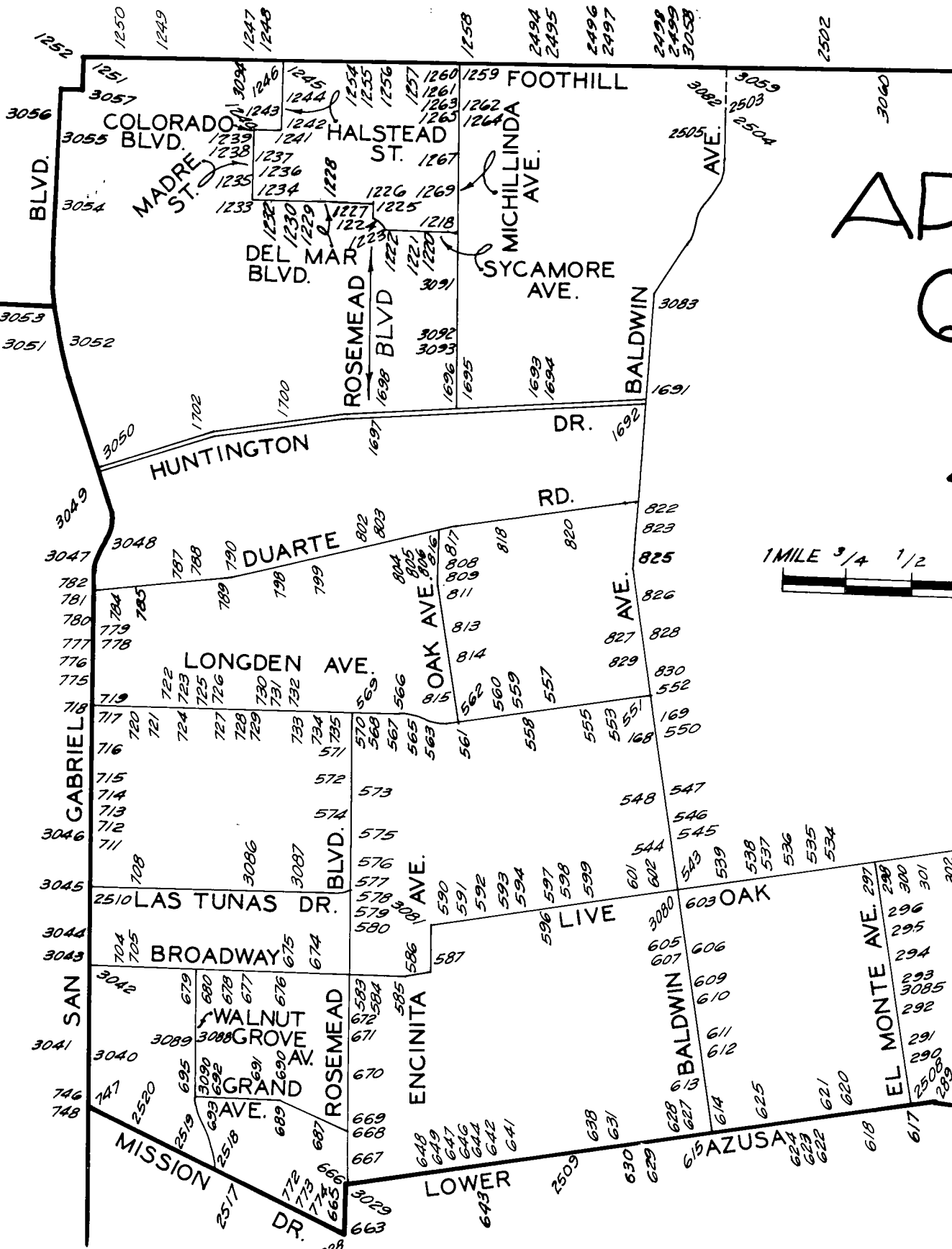
ARCADIA QUAD

QUAD



EMEAD QUAD

PASADENA QUAD



ROSEMEAD QUA

1

QUAD-YEAR	ELEV	DESCRIPTION (INCLUDE QUAD AND YEAR IN DESCRIPTION)	BM NUMBER
BASELINE (1965)	331.672	L+T MCR @ NW COR OUT + HEMLOCK ST	BG <u>154</u>
BASELINE (1965)	352.326	L+BN 3FT S BCR @ S OUT PECK RD + LIVE OAK AVE	BG <u>160</u>
BASELINE (1965)	352.698	CS MON 215FT W C/L PECK OUT 30FT N C/L LIVE OAK AVE	BG <u>163</u>
ARCADIA (1965)	420.880	USC+GS MON TOP OUT POST 25FT E C/L BALDWIN AVE + 32 OUT C/L WALNUT AVE MKD (RM2)	BG <u>168</u>
ARCADIA (1965)	422.930	USC+GS MON TOP OF CONC OUT 25FT E C/L BALDWIN AVE + 133FT N OUT WALNUT AVE MKD (RM2)	BG <u>169</u>
ARCADIA (1965)	358.842	L+T 1FT E OF END OF CB @ SE COR PECK RD + LONC DEN AVE 90FT E + 38FT S C/L INT	BG <u>170</u>
BASELINE (1965)	304.485	BT SPK E CB 8FT N BCR @ NE COR LOWER AZUSA RD + EL MONTE AVE	BG <u>289</u>
ARCADIA (1965)	309.653	BT SPK E CB EL MONTE AVE 18FT N CONC DR TO HSE NO 4850 28FT E C/L 500FT N LOWER AZUSA RD MKD (TE 466)	BG <u>290</u>
ARCADIA (1965)	314.613	BT SPK E CB 17FT S BCR @ SE COR GRAND AVE + EL MONTE AVE MKD (TE 465)	BG <u>291</u>
ARCADIA (1965)	323.120	BT SPK E CB EL MONTE AVE 475FT S FREER ST MKD (TE 462)	BG <u>292</u>
ARCADIA (1965)	326.771	BT SPK W CB 10FT S BCR @ SW COR FREER ST + EL MONTE AVE MKD (TE 461)	BG <u>293</u>
ARCADIA (1965)	332.561	BT SPK E CB EL MONTE AVE 28FT E C/L + 28FT S C/L PROD OLIVE ST MKD (TE 459)	BG <u>294</u>
ARCADIA (1965)	337.849	BT SPK E CB 9FT S BCR @ SE COR EL MONTE AVE + DAINES DR MKD (TE 551)	BG <u>295</u>
ARCADIA (1965)	341.022	BT SPK W CB EL MONTE AVE 7FT S C/L PROD DANBURY ST MKD (TE 553)	BG <u>296</u>
ARCADIA (1965)	350.865	BT SPK S CB 6FT OUT BCR @ SW COR LIVE OAK AVE + EL MONTE AVE MKD (TE 516)	BG <u>297</u>
ARCADIA (1965)	350.822	BT SPK S CB 8FT E BCR @ SE COR LIVE OAK AVE + EL MONTE AVE MKD (TE 517)	BG <u>298</u>
ARCADIA (1965)	351.147	PKSCB 5FT E BCR @ SE COR PERSIMMON AVE + LIVE OAK AVE	BG <u>300</u>
ARCADIA (1965)	351.883	BT SPK 6FT W BCR @ SW COR MC CULLOCH AVE + LIVE OAK AVE MKD (TE 520)	BG <u>301</u>
ARCADIA (1965)	352.243	BT SPK 8FT W BCR @ SW COR WELAND AVE + LIVE OAK AVE MKD (TE 522)	BG <u>302</u>
ARCADIA (1965)	348.895	BT SPK 5FT OUT BCR @ SW COR DOUBLE DRIVE + LIVE OAK AVE MKD (TE 524)	BG <u>303</u>
ARCADIA (1965)	348.746	BT SPK S CB LIVE OAK AVE 20FT W C/L PROD LOUISE AVE MKD (TE 526)	BG <u>304</u>
ARCADIA (1965)	348.004	BT SPK 4FT W BCR @ SW COR MYRTUS AVE + LIVE OAK AVE MKD (TE 527)	BG <u>305</u>
ARCADIA (1965)	343.691	SPK IN S OUT LIVE OAK AVE 10FT E CB RET @ SE COR FARNA AVE OUT + 57FT E C/L INT CB MKD (TE 873)	BG <u>308</u>

QUAD-YEAR	ELEV	DESCRIPTION (INCLUDE QUAD AND YEAR IN DESCRIPTION)	BM NUMBER
ARCADIA (1965)	344.984	L+T IN S CB LIVE OAK AVE 8FT W BCR @ SW COR HEMPSTEAD AVE (1965)	BG 309
ARCADIA (1965)	346.903	L+T 4FT W BCR @ SW COR CENTER AVE + LIVE OAK AVE	BG 312
ARCADIA (1965)	347.332	L+BN 5FT E BCR @ SW COR NINTH AVE + LIVE OAK AVE	BG 313
ARCADIA (1965)	347.804	PK N CB SERVICE RD LIVE OAK AVE C/L PROD 10TH AVE + 105FT W C/L HODGES AVE	BG 314
ARCADIA (1965)	347.684	L+T 1FT E BCR SERVICE RD @ SE COR EISENHOWER AVE + LIVE OAK AVE	BG 315
ARCADIA (1965)	349.503	L+T S CB LIVE OAK AVE 1FT W ISLAND BCR @ SW COR MAYFLOWER AVE 38FT S + 35FT W C/L INT	BG 316
ARCADIA (1965)	351.920	L+T 1FT W BCR @ SW COR LYND AVE + LIVE OAK AV	BG 317
ARCADIA (1965)	356.171	L+PK W CB 6FT N BCR @ NW COR LONGLEY WAY + LIVE OAK AVE MKD (TE 513)	BG 534
ARCADIA (1965)	359.916	L+PK E CB 5FT N BCR @ NE COR WARREN WAY + LIVE OAK AVE MKD (TE 512)	BG 535
ARCADIA (1965)	362.376	L+PK W CB 6FT N BCR @ NW COR CAROLINE WAY + LIVE OAK AVE MKD (TE 510)	BG 536
ARCADIA (1965)	363.643	L+SPK E CB 9FT N BCR @ NE COR HOLLY AVE + LIVE OAK AVE MKD (TE 508)	BG 537
ARCADIA (1965)	366.561	PK W CB 5FT N BCR @ NW COR WINTHROP AVE + LIVE OAK AVE MKD (TE 507)	BG 538
ARCADIA (1965)	369.742	PK W CB 5FT N BCR @ NW COR BRADFORD AVE + LIVE OAK AVE MKD (TE 506)	BG 539
ARCADIA (1965)	375.781	SPK E C LIVE OAK AVE BCR @ NE COR BALDWIN AVE + LIVE OAK AVE	BG 543
ARCADIA (1965)	383.030	PK+W W CB 5FT BCR @ SW COR BALDWIN AVE + WORKMAN AVE	BG 544
ARCADIA (1965)	387.973	L+BN S CB LAS TUNAS DR 15FT E BCR @ SE COR BALDWIN AVE 80FT E + 95FT S C/L INT	BG 545
ARCADIA (1965)	390.098	L+SPK E C LAS TUNAS DR BCR @ NE COR BALDWIN AVE + LAS TUNAS DR	BG 546
ARCADIA (1965)	394.266	L N+W S C WOODRUFF AVE BCR @ SE COR BALDWIN AVE + WOODRUFF AVE TO THE E	BG 547
ARCADIA (1965)	398.576	PK+W W CB 5FT S C @ SW COR BALDWIN AVE + WOODRUFF AVE TO THE E MKD (TE 89)	BG 548
ARCADIA (1965)	418.518	L+SPK E CB 10FT S BCR @ SE COR BALDWIN AVE + WALNUT AVE	BG 550
ARCADIA (1965)	427.333	L+BN W CB 6FT S BCR @ SW COR BALDWIN AVE + LONGDEN AVE MKD (TE 22)	BG 551
ARCADIA (1965)	428.255	PK+W E CB 5FT N BCR @ NE COR BALDWIN AVE + LONGDEN AVE MKD (TE 23)	BG 552
ARCADIA (1965)	430.606	L+T CONC DR TO HSE NO 9846 1FT E OF W EDGE + 8FT S OF N EDGE + 25FT S C/L LONGDEN AVE	BG 553

QUAD-YEAR	ELEV	DESCRIPTION (INCLUDE QUAD AND YEAR IN DESCRIPTION)	BM NUMBER
ARCADIA (1965)	433.457	L+T @ SE COR OF CONC WK TO HSE NO 6303 62FT W C/L GOLDEN WEST AVE + 30FT N C/L LONGDEN AVE	BG 555
ARCADIA (1965)	437.013	L+BN N CB OF LONGDEN AVE 18FT N C/L 3FT W OF CONC APRON OF DR TO HSE NO 9651 + 330FT W KAUFFMAN AVE	BG 557
ARCADIA (1965)	437.988	L+SPK E CB 9FT S BCR @ SE COR TEMPLE CITY BLVD + LONGDEN AVE	BG 558
ARCADIA (1965)	439.408	L+N W CB 1FT N BCR @ NW COR LONGDEN AVE + TEMPLE CITY BLVD	BG 559
ARCADIA (1965)	442.792	L+BN N CB OF LONGDEN AVE 18FT N C/L 15FT E OF DR TO GIRL SCOUTS BLDG NO 9509 + 300FT W PRIMROSE AVE	BG 560
ARCADIA (1965)	447.257	L+SPK S CB 10FT E BCR @ SE COR OAK AVE + LONGDEN AVE MKD (TE 118)	BG 561
ARCADIA (1965)	448.318	L+T E CB 6FT N BCR @ NE COR OAK AVE + LONGDEN AVE	BG 562
ARCADIA (1965)	449.170	L+SPK W CB ENCINITA AVE 18FT W C/L 15FT S OF END OF CB + 40FT S C/L PROD LONGDEN AVE FRONT OF HSE NO 6261 MKD (TE 119)	BG 563
ARCADIA (1965)	456.635	L+BN W CB 12FT S OF END OF CB 40FT S + 15FT W C/L INT LONGDEN AVE + LOMA AVE MKD (TE 145)	BG 565
ARCADIA (1965)	459.892	L+BN OUT CB RET @ NW COR LONGDEN AVE + LIMA AVE	BG 566
ARCADIA (1965)	458.465	L+BN E CB 5FT S OF END OF CB 35FT S C/L LONGDEN AVE @ SE COR HART AVE MKD (TE 144)	BG 567
ARCADIA (1965)	457.235	L+BN E CB 4FT S OF END OF CB 35FT S C/L LONGDEN AVE @ SE COR SULTANA AVE MKD (TE 143)	BG 568
ARCADIA (1965)	461.771	L+BN E CB 1FT N BCR @ NE COR ROSEMEAD BLVD + LONGDEN AVE	BG 569
ARCADIA (1965)	459.990	L+SPK E CB 5FT S BCR @ SE COR ROSEMEAD BLVD + LONGDEN AVE MKD (TE 142)	BG 570
ARCADIA (1965)	449.760	L+BN W CB ROSEMEAD AVE 2FT N OF DR TO HSE NO 6165 800FT S LONGDEN AVE	BG 571
ARCADIA (1965)	438.368	L+BN N CB 3FT W BCR @ NW COR ROSEMEAD BLVD + GARIBALDI AVE	BG 572
ARCADIA (1965)	436.907	BT SPK IN E CB 6FT S BCR @ SE COR ROSEMEAD BLVD + GARIBALDI AVE MKD (TE 139)	BG 573
ARCADIA (1965)	427.732	L+BN IN W CB ROSEMEAD BLVD 1FT N OF CONC DR TO HSE NO 5947 MIDWAY BET GARIBALDI AV + HERMOSA DR	BG 574
ARCADIA (1965)	420.672	L+SPK E CB 10FT N BCR @ NE COR ROSEMEAD BLVD + HERMOSA DR MKD (TE 137)	BG 575
ARCADIA (1965)	412.633	L+SPK E CB 6FT S BCR @ SE COR ROSEMEAD BLVD + ELM AVE MKD (TE 136)	BG 576
ARCADIA (1965)	408.872	L+SPK E CB 29FT N BCR @ NE COR ROSEMEAD BLVD + LAS TUNAS DR MKD (TE 135)	BG 577

QUAD-YEAR	ELEV	DESCRIPTION (INCLUDE QUAD AND YEAR IN DESCRIPTION)	BM NUMBER
ARCADIA (1965)	406.628	L+T S CB 42FT E BCR @ SE COR ROSEMEAD BLVD + LAS TUNAS DR	BG 578
ARCADIA (1965)	405.319	BT SPK E CB ROSEMEAD BLVD 5FT S OF S BCR OF OF 1ST ALLEY S OF LAS TUNAS DR MKD (TE785)	BG 579
ARCADIA (1965)	400.786	L+SPK E CB ROSEMEAD BLVD 50FT N C/L PROD LIVE OAK AVE IN FRONT OF BLDG NO 5650 MKD (TE 783)	BG 580
ARCADIA (1965)	386.065	L+BN CTR OF OUT @ SE COR ROSEMEAD BLVD + BROADWAY @ 44FT E/O C/L INT	BG 583
ARCADIA (1965)	380.306	L+T NR E EDGE OF CONC WK TO HSE NO 9040 @ SW COR SULTANA AVE + BROADWAY 75FT W + 35FT S C/L INT	BG 584
ARCADIA (1965)	374.342	L+SPK CONC WK HSE NO 9144 10FT E OF W END + 1FT S OF N EDGE 55FT E + 35FT S C/L INT LOMA AVE + BROADWAY	BG 585
ARCADIA (1965)	370.837	L+SPK W CB 4FT S BCR @ SW COR ENCINITA AVE + BROADWAY MKD (TE 62)	BG 586
ARCADIA (1965)	373.397	L+SPK S EDGE DD CONC WK TO HSE NO 9205 15FT E OF W END @ NE COR ENCINITA AVE + BROADWAY 30FT E + 75FT N C/L INT	BG 587
ARCADIA (1965)	386.616	L+SPK E CB RIO HONDO AVE 15FT E C/L 20FT N OF END OF CB + 45FT N C/L LIVE OAK AVE MKD (TE 24)	BG 590
ARCADIA (1965)	387.103	L+SPK W CB ALESSANDRO AVE 32FT N OF END OF CB + 62FT N C/L LIVE OAK AVE MKD (TE 25)	BG 591
ARCADIA (1965)	386.113	L+SPK W CB OAK AVE 20FT N OF END OF CB + 50FT N C/L LIVE OAK AVE MKD (TE 26)	BG 592
ARCADIA (1965)	384.356	L+SPK W CB CLOVERLY AVE 15FT N OF END OF CB + 45FT N C/L LIVE OAK AVE MKD (TE 27)	BG 593
ARCADIA (1965)	383.629	L+SPK W CB PRIMROSE AVE 12FT N OF END OF CB + 42FT N C/L LIVE OAK AVE MKD (TE 28)	BG 594
ARCADIA (1965)	379.855	CS MON C/L INT LIVE OAK AVE + TEMPLE CITY BLVD	BG 596
ARCADIA (1965)	381.745	L+SPK E CB 35FT N BCR @ NE COR TEMPLE CITY BLVD + LIVE OAK AVE MKD (TE 30)	BG 597
ARCADIA (1965)	381.035	L+BN E CB CAMELLIA AVE 50FT N OF END OF CB + 80FT N C/L LIVE OAK AVE	BG 598
ARCADIA (1965)	380.058	L+SPK W CB KAUFFMAN AVE 40FT N OF END OF CB + 70FT N C/L LIVE OAK AVE MKD (TE 32)	BG 599
ARCADIA (1965)	377.274	L+SPK E CB AGNES AVE 20FT E + 50FT N C/L INT @ LIVE OAK AVE 20FT N OF END CB-MKD (TE 35)	BG 601
ARCADIA (1965)	374.640	L+SPK E CB ROWLAND AVE 20FT E + 50FT N C/L INT @ LIVE OAK AVE 25FT N OF END CB-MKD (TE 36)	BG 602
ARCADIA (1965)	369.254	L+T W CB 1FT S BCR @ SW COR BALDWIN AVE + DUFFY ST	BG 603
ARCADIA (1965)	361.351	L+T W CB 1FT S BCR @ SW COR BALDWIN AVE + BROADWAY	BG 605

QUAD-YEAR	ELEV	DESCRIPTION (INCLUDE QUAD AND YEAR IN DESCRIPTION)	BM NUMBER
ARCADIA (1965)	357.456	CS MON @ C/L INT BALDWIN AVE + DAINES DR	BG 606
ARCADIA (1965)	357.749	L+T W CB 1FT S BCR @ SW COR BALDWIN AVE + DAINES DR 40FT W. + 40FT S C/L INT	BG 607
BASELINE (1965)	316.898	USC+GS BR CAP MON IN CONC TRAFFIC SIGNAL BASE 45FT N C/L LOWER AZUSA RD + 22FT E C/L BALDWIN AVE MKD (X-1142-1961)	BG <u>614</u>
BASELINE (1965)	313.592	R D MON @ C/L INT BALDWIN AVE + LOWER AZUSA RD	BG 615
BASELINE (1965)	303.555	L+T IN CTR OF (OUT) SE COR LOWER AZUSA RD + EL MONTE AVE	BG <u>617</u>
BASELINE (1965)	304.023	L+SPK N CB 12FT E BCR @ NE COR LOWER AZUSA RD + DOREEN AVE	BG 618
BASELINE (1965)	304.636	L+SPK N CB 3FT E BCR @ NE COR LOWER AZUSA RD + HALIFAX RD MKD (TE 471)	BG 620
BASELINE (1965)	305.363	L+SPK N CB 5FT E BCR @ NE COR LOWER AZUSA RD + HALLOWELL AVE MKD (TE 473)	BG 621
BASELINE (1965)	306.051	L+SPK E CB 8FT S BCR @ SE COR ARDEN DR + LOWER AZUSA RD MKD (TE 474)	BG <u>622</u>
BASELINE (1965)	306.571	L+SPK S CB 8FT W BCR @ SW COR LOWER AZUSA RD + ARDEN DR MKD (TE 475)	BG <u>623</u>
BASELINE (1965)	306.905	L+SPK S CB LOWER AZUSA RD 55FT E C/L PROD GLICKMAN AVE 8FT E OF W DR TO CHARLES E GIDLEY SCHOOL MKD (TE 476)	BG 624
BASELINE (1965)	310.174	L+SPK E CB 5FT N BCR @ NE COR LOWER AZUSA RD + BIRCHLAND PL MKD (TE 477)	BG 625
BASELINE (1965)	316.426	L+T N CB LOWER AZUSA RD ON C/L PROD ROWLAND AVE 68FT W C/L WILLMONTE AV	BG 627
BASELINE (1965)	315.744	L+SPK N CB 5FT E BCR @ NE COR AGNES AVE + LOWER AZUSA RD MKD (TE 10)	BG 628
BASELINE (1965)	313.876	L+T WK 40FT S C/L LOWER AZUSA RD ON C/L PROD GOLDEN WEST AVE	BG 629
BASELINE (1965)	312.215	L+SPK S CB 5FT E BCR @ SE COR ELLIS LN + LOWER AZUSA RD	BG 630
BASELINE (1965)	312.735	L+T N CB LOWER AZUSA RD 40FT W C/L PROD ELLIS LN IN FRONT OF HSE NO 9667	BG 631
BASELINE (1965)	314.762	L+T N CB 1FT W BCR @ NE COR LOWER AZUSA RD + TEMPLE CITY BLVD	BG 638
BASELINE (1965)	316.781	L+SPK N CB 6FT W BCR @ NW COR HELEO AVE + LOWER AZUSA RD MKD (TE 22)	BG 641
BASELINE (1965)	318.380	L+T N CB LOWER AZUSA RD 80FT W CONC DR TO HSE NO 9371 1FT E OF END CB 420FT E RIO HONDO AVE	BG 642
BASELINE (1965)	318.007	R D MON ON C/L LOWER AZUSA RD @ ANG PT 420FT E RIO HONDO AVE	BG 643
BASELINE (1965)	330.760	USC+GS BR CAP MON IN W CONC ABUTMENT @ SW COR OF LOWER AZUSA RD BRIDGE NO B 1053 OVER EATON CN WASH 34FT S C/L LOWER AZUSA RD + 200FT W C/L RIO HONDO AVE MKD (BM S 1142-1961)	BG 644

QUAD-YEAR	ELEV	DESCRIPTION (INCLUDE QUAD AND YEAR IN DESCRIPTION)	BM NUMBER
BASELINE (1965)	327.842	L+BN S CB LOWER AZUSA RD 40FT W C/L SPRR + E OF ENCINITA AVE	BG 646
BASELINE (1965)	324.106	L+SPK IN N CB 6FT E BCR @ NE COR LOWER AZUSA RD + ENCINITA AVE MKD (WM254-A)	BG 647
BASELINE (1965)	323.761	L+T N CB 1FT W BCR @ NW COR LOWER AZUSA RD + ENCINITA AVE	BG 648
BASELINE (1965)	322.153	CS MON @ C/L INT LOWER AZUSA RD + ENCINITA AVE	BG 649
BASELINE (1965)	331.070	CS MON C/L MISSION DR 80FT E C/L ROSEMEAD BLVD	BG 663
BASELINE (1965)	332.921	L+T MCR @ W COR MISSION DR + ROSEMEAD BLVD	BG 665
BASELINE (1965)	336.471	L+T W CB ROSEMEAD BLVD 50FT S C/L PROD LOWER AZUSA RD	BG 666
ARCADIA (1965)	341.588	L+T W CB ROSEMEAD BLVD W SERVICE RD 55FT N OF ENT TO ALHAMBRA SANATORIUM NO 4619 13FT N PP NO 733059E	BG 667
ARCADIA (1965)	348.233	L+SPK W CB 6FT S BCR @ SW COR ROSEMEAD BLVD W SERVICE RD + GRAND AVE MKD (WM 3)	BG 668
ARCADIA (1965)	353.020	L+BN 1FT UP IN S WALL @ W END SPRR BRIDGE OVER ROSEMEAD BLVD 70FT N C/L GRAND AVE	BG 669
ARCADIA (1965)	362.428	L+T IN W CB ROSEMEAD BLVD (W SERVICE RD) ON C/L PENTLAND ST PROD FROM E 80FT W C/L ROSEMEAD BLVD	BG 670
ARCADIA (1965)	373.646	L+SPK E CB 10FT N BCR @ NE COR SERENO DR + ROSEMEAD BLVD (TE 776)	BG 671
ARCADIA (1965)	382.757	FC DISC IN CONC WK NE COR BRIDGE NO 53- 329 OVER EATON WASH 4FT S BCR @ SE COR ROSEMEAD BLVD + OLIVE ST	BG 672
ARCADIA (1965)	394.019	CS MON @ WELL @ C/L INT BROADWAY + ACACIA ST MKD (CO SUR)	BG 674
ARCADIA (1965)	395.169	L+T W CB MUSCATEL AVE 8FT N OF END CB + 40FT N C/L BROADWAY	BG 675
ARCADIA (1965)	395.424	L+T W CB MUSCATEL AVE 15FT S OF END CB 80FT S OF C/L BROADWAY	BG 676
ARCADIA (1965)	399.519	L+T S CB 1FT E BCR @ SE COR BROADWAY + LA PRESA AVE (BURTON AVE)	BG 677
ARCADIA (1965)	400.024	CS MON 12IN DN ON C/L BROADWAY 30FT E OF W P/L EDISON TRANSMISSION LINES MKD (CO ENG RE 3363)	BG 678
ARCADIA (1965)	399.573	L+T S EDGE CONC WK 5FT FROM END 30FT S C/L BROADWAY 35FT W C/L WALNUT GROVE	BG 679
ARCADIA (1965)	398.491	L+T N EDGE CONC DR @ SW COR BROADWAY + WALNUT GROVE AVE 133FT S + 35FT W C/L INT	BG 680
ARCADIA (1965)	351.433	SPK NEAR S EDGE CONC WALK TO HSE NO 4756 38FT E C/L IVAR AVE + 100FT S C/L GRAND AVE (MKD WM 297)	BG 687

MAY 1968

LOS ANGELES COUNTY ROAD DEPARTMENT
SURVEY SECTION FIELD ENGINEERING DIVISION

PAGE

QUAD-YEAR	ELEV	DESCRIPTION (INCLUDE QUAD AND YEAR IN DESCRIPTION)	BM NUMBER
ARCADIA (1965)	361.376	CS MON @ PI OF GRAND AVE 6FT E C/L MUSCATEL AVE	BG 689
ARCADIA (1965)	361.536	CS MON @ C/L INT GRAND AVE + MUSCATEL AVE	BG 690
ARCADIA (1965)	367.573	L+T S CB 1FT W BCR @ SW COR GRAND AVE + BARTLETT AVE	BG 691
ARCADIA (1965)	369.421	CS MON W P/L OF OUT R/W 135FT E C/L INT HALKETT AVE + INT AVE	BG 692
ARCADIA (1965)	371.220	L+T S CB 1FT E BCR @ SE COR GRAND AVE + HALKETT AVE	BG 693
ARCADIA (1965)	372.067	SPK N CB GRAND AVE 4FT E C/L PROD WILLARD AVE 5FT W OF END OF CB MKD (WM 401)	BG 695
ARCADIA (1965)	398.385	L+T W CB 3FT N BCR @ NW COR CHARLOTTE AVE + BROADWAY	BG 704
ARCADIA (1965)	398.332	L+T E CB CHARLOTTE AVE 3FT N OF BCR @ NE COR C/L INT @ BROADWAY	BG 705
ARCADIA (1965)	416.779	L+SPK N CB 22FT E BCR @ NE COR LAS TUNAS DR + CHARLOTTE AVE MKD (BM 216)	BG 708
ARCADIA (1965)	446.949	SPK S CB 6FT E BCR @ SE COR HERMOSA DR + SAN GABRIEL BLVD MKD (BM 224)	BG 711
ARCADIA (1965)	451.668	SPK E CB 6FT S BCR @ SE COR SAN GABRIEL BLVD + LESLIE DR MKD (BM 225)	BG 712
ARCADIA (1965)	456.846	L+T S CB 2FT E BCR @ SE COR SAN GABRIEL BLVD + SANTA YNEZ ST MKD (BM 3A)	BG 713
ARCADIA (1965)	461.729	L+T S CB 3FT E BCR @ SE COR BEVAN ST + SAN GABRIEL BLVD MKD (BM 4A)	BG 714
ARCADIA (1965)	466.519	SPK E CB 6FT S BCR @ SE COR GARIBALDI AVE + SAN GABRIEL BLVD MKD (BM 226)	BG 715
ARCADIA (1965)	472.907	SPK E CB 12FT N BCR @ NE COR OF SAN GABRIEL BLVD + BEVERLY DR MKD (TE 621)	BG 716
ARCADIA (1965)	483.044	SPK E CB SAN GABRIEL BLVD 15FT S BCR @ SE COR LONGDEN AVE	BG 717
ARCADIA (1965)	483.195	RD MON @ C/L INT SAN GABRIEL BLVD + LONGDEN AVE	BG 718
ARCADIA (1965)	483.139	L+T S CB 19FT E CB RET @ SE COR LONGDEN AVE + SAN GABRIEL BLVD MKD (BM 7-A)	BG 719
ARCADIA (1965)	475.869	SPK S CB LONGDEN AVE 5FT E C/L PROD CHARLOTTE AVE MKD (TE 612)	BG 720
ARCADIA (1965)	474.393	SPK S CB LONGDEN AVE 5FT W C/L PROD LONGMONT AVE MKD (TE 611)	BG 721
ARCADIA (1965)	469.308	L+T N CB 1FT E BCR @ NE COR LONGDEN AVE + DEL LOMA AVE	BG 722
ARCADIA (1965)	468.139	L+SPK N CB 5FT OUT @ NW COR LONGDEN AVE + WILLARD AVE MKD (TE 610)	BG 723
ARCADIA (1965)	467.782	L+BN S CB 1FT E BCR @ SE COR LONGDEN AVE + WILLARD AVE	BG 724

QUAD-YEAR	ELEV	DESCRIPTION (INCLUDE QUAD AND YEAR IN DESCRIPTION)	BM NUMBER
ARCADIA (1965)	469.306	L+BN N CB 1FT W BCR @ NW COR LONGDEN AVE + DEERFIELD AVE MKD (TE 608)	BG 725
ARCADIA (1965)	470.495	L+BN N CB 5FT W BCR @ NW COR LONGDEN AVE + VISTA ST TO THE N	BG 726
ARCADIA (1965)	469.438	L+BN E CB 1FT S BCR @ SE COR LONGDEN AVE + BIDN AVE MKD (TE 607)	BG 727
ARCADIA (1965)	471.802	FC DISC IN SE COR CONC FOUNDATION TO POWER TRANSMISSION TOWER 10 TO -5 50FT S C/L LONGDEN AVE + 65FT W C/L BURTON AVE TO S MKD (59-39)	BG 728
ARCADIA (1965)	469.410	L+SPK E CB BURTON AVE 12FT S OF END OF CB 42FT S C/L LONGDEN AVE MKD (TE 606)	BG 729
ARCADIA (1965)	469.952	FC BR TAG IN W CB LEMON AVE 6FT N OF END OF CB 70FT N C/L LONGDEN AVE MKD (TE 605)	BG 730
ARCADIA (1965)	468.708	L+SPK N CB 10FT W BCR @ NW COR LONGDEN AVE + AVON AVE MKD (E 604)	BG 731
ARCADIA (1965)	467.839	L+SPK N CB 10FT W BCR @ NW COR LONGDEN AVE + MUSCATEL AVE MKD (TE 603)	BG 732
ARCADIA (1965)	467.070	L+SPK W CB MUSCATEL AVE 15FT S OF END CB 48FT S C/L LONGDEN AVE MKD (TE 502)	BG 733
ARCADIA (1965)	465.338	L+BN E CB IVAR AVE 9FT S OF END CB 45FT S C/L LONGDEN AVE MKD (TE 601)	BG 734
ARCADIA (1965)	463.140	L+BN E CB OF RENO AVE 6FT S OF END CB 38FT S C/L LONGDEN AVE MKD (TE 600)	BG 735
BASELINE (1965)	366.228	L+T CTR OF CB RET @ NW COR SAN GABRIEL BLVD + MISSION DR	BG 746
BASELINE (1965)	365.404	CS MON @ C/L INT SAN GABRIEL BLVD + MISSION DR	BG 747
BASELINE (1965)	365.619	L+T W CB 7FT S BCR @ SW COR SAN GABRIEL BLVD + MISSION DR	BG 748
BASELINE (1965)	345.934	SPK IN S EDGE CONC APRON TO GAS STA NO 8801 27FT N + 25FT E C/L INT MISSION DR + MUSCATEL AVE MKD (WM 44)	BG 772
BASELINE (1965)	339.065	SPK E EDGE CONC APRON TO USE NO 8868 35FT S + 17FT W C/L INT MISSION DR + IVAR AVE 3FT S OF END OF WK	BG 773
BASELINE (1965)	336.159	SPK NR SW COR CONC APRON TO STORE NO 8923 40FT N + 20FT E C/L INT MISSION DR + IVAR AVE TO THE N	BG 774
ARCADIA (1965)	490.142	L+SPK W CB 6FT N BCR @ NW COR LOS OLIVOS DR + SAN GABRIEL BLVD MKD (TE 615)	BG 775
ARCADIA (1965)	496.335	SPK W CB 10FT N BCR @ NW COR SOMERSET PL + SAN GABRIEL BLVD MKD (TE 616)	BG 776
ARCADIA (1965)	504.142	L+SPK W CB 6FT S BCR @ SW COR SHEFFIELD RD + SAN GABRIEL BLVD MKD (TE 617)	BG 777
ARCADIA (1965)	504.559	R D MON @ C/L INT SAN GABRIEL BLVD + CLARENCE AVE	BG 778

QUAD-YEAR	ELEV	DESCRIPTION (INCLUDE QUAD AND YEAR IN DESCRIPTION)	BM NUMBER
ARCADIA (1965)	506.130	L+SPK E CB 10FT N BCR @ NE COR CLARENCE AVE E + SAN GABRIEL MKD (TE 618)	BG 779
ARCADIA (1965)	513.618	L+SPK W CB 6FT N BCR @ NW COR WOODLAWN AVE + SAN GABRIEL BLVD MKD (TE 619)	BG 780
ARCADIA (1965)	528.455	R D MON @ C/L INT DUARTE RD + SAN GABRIEL BLVD	BG 781
ARCADIA (1965)	530.651	L+SPK W CB 10FT N OUT NW COR SAN GABRIEL BLVD + DUARTE RD MKD (TE 340)	BG 782
ARCADIA (1965)	526.624	L+SPK W CB 6FT S BCR @ SW COR DUARTE RD + PROVENCE RD MKD (TE 338)	BG 784
ARCADIA (1965)	523.483	L+T S CB 1FT W BCR @ SE COR DUARTE RD + KIMDALE RD	BG 785
ARCADIA (1965)	517.716	L+SPK W CB 7FT OU @ NW COR RUTHLEE AVE + DUARTE RD MKD (TE 336)	BG 787
ARCADIA (1965)	515.722	SPK W CB VISTA ST 10FT N END CB + 45FT N C/L DUARTE RD MKD (TE 335)	BG 788
ARCADIA (1965)	509.304	L+T CONC BASE OF WALL 1FT S OF ANG PT 17FT W C/L KARIN PL + 36FT S C/L DUARTE RD	BG 789
ARCADIA (1965)	510.009	CS MON IN WELL @ C/L INT LA PRESA DR + DUARTE RD 6FT W PI OF CURVE ON C/L DUARTE RD	BG 790
ARCADIA (1965)	511.407	L+SPK E CB DR TO HSE NO 8712 32FT S + 27FT E C/L INT MUSCATEL AVE TO THE N + DUARTE RD MKD (TE 329)	BG 798
ARCADIA (1965)	515.407	L+T E CB OF DR TO HSE NO 8850 55FT S C/L DUARTE RD + 185FT E C/L MAYESDALE AVE	BG 799
ARCADIA (1965)	513.251	RDBM TAG IN N CB DUARTE RD 2FT W CB RET @ NW COR OF ROSEMEAD BLVD 40FT N + 62FT W C/L INT	BG 802
ARCADIA (1965)	512.840	L+SPK N CB 2FT E OUT COR ROSEMEAD BLVD + DUARTE RD MKD (TE 324)	BG 803
ARCADIA (1965)	510.470	L+BN E CB OF DR TO HSE NO 9066 30FT S C/L DUARTE RD 1FT OUT PILLAR	BG 804
ARCADIA (1965)	509.267	L+T IN CTR CONC DR TO HSE NO 9106 30FT S C/L DUARTE RD + 315FT W ENCINA AVE	BG 805
ARCADIA (1965)	507.534	L+T IN W CB OAK AVE 4 OUT END OF CB @ SW COR OF DUARTE RD 20FT W + 75FT S C/L INT	BG 806
ARCADIA (1965)	495.943	L+SPK E CB 12FT S BCR @ SE COR OAK AVE + NAOMI AVE MKD (TE 352)	BG 808
ARCADIA (1965)	489.401	L+SPK E CB OAK AVE 12FT N C/L ARDENDALE AVE FRONT OF HSE NO 6734 MKD (TE 353)	BG 809
ARCADIA (1965)	482.729	L+SPK E CB OAK AVE 5FT S C/L PROD CAMINO REAL TO W MKD (TE 355)	BG 811
ARCADIA (1965)	471.712	SPK E CB OAK AVE 3FT N C/L PROD EMPEROR AVE TO W MKD (TE 357)	BG 813
ARCADIA (1965)	466.356	L+SPK E CB 2FT S BCR @ SE COR OAK AVE + LEMON AVE MKD (TE 199)	BG 814
ARCADIA (1965)	453.499	L+SPK W CB OAK AVE 35FT S C/L PROD OLEMA ST FRONT OF HSE NO 6333 MKD (TE 204)	BG 815

QUAD-YEAR	ELEV	DESCRIPTION (INCLUDE QUAD AND YEAR IN DESCRIPTION)	BM NUMBER
ARCADIA (1965)	509.469	L+T S CB DUARTE RD 18FT S C/L + 293FT E C/L OAK AVE OUT	BG 816
ARCADIA (1965)	508.412	L+SPK S CB DUARTE RD P HSE NO 1147 IN FRONT OF RESERVOIR MKD (TE 320) OUT	BG 817
ARCADIA (1965)	504.395	L+N E CB 3FT BCR @ SE COR TEMPLE CITY BLVD + DUARTE RD MKD (TE 318) OUT	BG 818
ARCADIA (1965)	478.441	L+BN E CB 10FT S BCR @ SE COR DUARTE RD + BALDWIN AVE	BG 822
ARCADIA (1965)	473.400	L+BN E CB 4FT BCR @ NE COR BALDWIN AVE + NAOMI AVE MKD (TE 311) OUT	BG 823
ARCADIA (1965)	466.948	RDBM TAG IN E CB BALDWIN AVE 50FT N CB RET @ NE COR CAMINO REAL AVE TO E 32FT E + 92FT N C/L INT	BG 825
ARCADIA (1965)	455.382	CS MON 48FT E C/L BALDWIN AVE + 11FT N C/L NORMAN AVE MKD (SD 20-5 1952 RE 63) OUT	BG 826
ARCADIA (1965)	447.929	L+BN W CB 5FT BCR @ NW COR LEMON AVE + BALDWIN AVE MKD (TE 287) OUT	BG 827
ARCADIA (1965)	445.286	L+PK E CB 5FT N BCR @ NW COR LEMON AVE + BALDWIN AVE MKD (TE 287) OUT	BG 828
ARCADIA (1965)	440.234	L+SPK N CB 5FT BCR @ NW COR BALDWIN AVE + VAL ST MKD (TE 285) OUT	BG 829
ARCADIA (1965)	434.211	L+PK E CB 5FT S BCR @ SW COR STELLA AVE + BALDWIN AVE MKD (TE 284) OUT	BG 830
ARCADIA (1965)	339.637	L+T E CB TYLER AVE ON C/L PROD DANESWOOD AVE	BG 953
ARCADIA (1965)	332.021	SPK W CB 5FT S BCR @ SW COR DAINES DR + TYLER AVE MKD (TE 534)	BG 954
ARCADIA (1965)	327.560	L+SPK W CB 8FT S BCR @ SW COR WILDFLOWER RD + TYLER AVE MKD (TE 535)	BG 955
ARCADIA (1965)	324.945	L+SPK E CB TYLER AVE 10FT S C/L PROD FREER ST MKD (TE 536)	BG 956
ARCADIA (1965)	324.153	L+T E CB 1FT S BCR @ SE COR TYLER AVE + MILOANN ST	BG 957
ARCADIA (1965)	308.762	L+BN IN W WALL OF DRAINAGE CHANNEL @ END CB 22FT W C/L TYLER AVE 127FT N OF ENT TO HONDO CERAMIC CO NO 5021 MKD SD 605)	BG 959
ARCADIA (1965)	308.127	L+N IN E WALL DRAINAGE CHANNEL 30FT W C/L TYLER AVE 55FT S OF ENT TO HONDO CERAMIC CO NO 5021 MKD (SD 601)	BG 960
BASELINE (1965)	315.266	CS MON @ C/L INT LOPEZ RD + TYLER AVE (E EDGE) OUT	BG 962
ARCADIA (1965)	601.658	CS MON 1FT W + 1FT N BCR @ NW COR MICHILLINDA AVE + SYCAMORE AVE	BG 1218
ARCADIA (1965)	615.197	L+T W EDGE CONC DR TO HSE NO 3834 SYCAMORE AVE 35FT S C/L	BG 1220
ARCADIA (1965)	618.059	L+T W EDGE CONC DR TO HSE NO 3798 SYCAMORE AVE 35FT S C/L	BG 1221

QUAD-YEAR	ELEV	DESCRIPTION (INCLUDE QUAD AND YEAR IN DESCRIPTION)	BM NUMBER
ARCADIA (1965)	623.708	L+SPK 2FT E BCR @ SE COR WALNUT DR + SYCAMORE AVE	BG 1222
ARCADIA (1965)	623.982	L+T IN CONC APRON OF DR TO HSE NO 325 WALNUT DR ON C/L PROD SYCAMORE AVE	BG 1223
ARCADIA (1965)	629.641	L+T 1FT S BCR @ SE COR MOUNTAIN VIEW AVE + ROSEMEAD BLVD	BG 1224
ARCADIA (1965)	630.943	L+T 1FT N BCR @ NE COR MOUNTAIN VIEW AVE + ROSEMEAD BLVD	BG 1225
ARCADIA (1965)	635.569	L+T E CB ROSEMEAD BLVD ON C/L PROD DEL MAR BLVD	BG 1226
ARCADIA (1965)	635.910	L+SPK 6FT W BCR @ SE COR DEL MAR BLVD + ROSEMEAD BLVD MKD (TE 2)	BG 1227
ARCADIA (1965)	642.250	L+T S EDGE CONC WK TO HSE NO 355 @ NE COR DEL MAR BLVD + BACKUS AVE 251 FT + 52FT N C/L INT	BG 1228
ARCADIA (1965)	644.187	L+T 1FT W BCR @ SE COR LOTUS AVE + DEL MAR BLVD	BG 1229
ARCADIA (1965)	645.279	L+T S CB DEL MAR BLVD 1FT W C/L RET @ SW COR LOTUS AVE 30FT S + 44FT W C/L INT	BG 1230
ARCADIA (1965)	653.904	L+T 1FT W BCR @ SW COR ALPINE ST + DEL MAR BLVD	BG 1232
ARCADIA (1965)	660.496	BT SPK 1FT S BCR @ SW COR MADRE ST + DEL MAR BLVD	BG 1233
ARCADIA (1965)	659.921	L+T 5FT E CB RET @ NE COR MADRE ST + DEL MAR BLVD	BG 1234
ARCADIA (1965)	666.502	L+T 3FT S BCR @ SE COR MILTON ST + MADRE ST	BG 1235
ARCADIA (1965)	672.456	L+T 2FT S BCR @ SE COR BRANDON ST + MADRE ST	BG 1236
ARCADIA (1965)	673.738	L+T 2FT N BCR @ NE COR BRANDON ST + MADRE ST	BG 1237
ARCADIA (1965)	678.899	L+T 6FT S BCR @ SE COR GREEN ST + MADRE ST	BG 1238
ARCADIA (1965)	685.015	BT SPK 6FT E BCR @ SE COR MADRE ST + COLORADO ST	BG 1239
ARCADIA (1965)	686.212	L+T 1FT E BCR @ NE COR MADRE ST (ALLEY) + COLORADO ST	BG 1240
ARCADIA (1965)	680.490	L+T 1FT W BCR @ NW COR HALSTEAD ST + COLORADO ST	BG 1241
ARCADIA (1965)	680.139	L+T 1FT N BCR @ NE COR HALSTEAD ST + COLORADO ST	BG 1242
ARCADIA (1965)	686.187	R D MON C/L HALSTEAD ST 500FT N C/L COLORADO ST	BG 1243
ARCADIA (1965)	694.728	BT SPK E CB HALSTEAD ST 17FT S OF S RAIL SFRR MKD (TE 24)	BG 1244
BASELINE (1965)	701.447	L+BN 1FT S BCR @ SE COR HALSTEAD ST + FOOTHILL BLVD	BG 1245

QUAD-YEAR	ELEV	DESCRIPTION (INCLUDE QUAD AND YEAR IN DESCRIPTION)	BM NUMBER
BASELINE (1965)	702.615	L+T 10FT E BCR @ SW COR HALSTEAD ST + FOOTHILL BLVD	BG 1246
BASELINE (1965)	714.382	L+BN 27FT N BCR @ NE COR SIERRA MADRE VILLA AVE + FOOTHILL BLVD	BG 1247
BASELINE (1965)	712.143	RAM SET N CB 30FT E BCR @ NE COR FOOTHILL BLVD + SIERRA MADRE VILLA AVE 35FT N + 90FT E C/L INT CB PAINTED (1958)	BG 1248
BASELINE (1965)	720.824	RAMSET 1FT W BCR @ NW COR SANTA PAULA AVE + FOOTHILL BLVD	BG 1249
BASELINE (1965)	724.101	RAMSET 3FT E BCR @ NE COR EATON DR + FOOTHILL BLVD	BG 1250
BASELINE (1965)	739.328	L+BT SPK 2FT E BCR @ SE COR DAISY AVE + FOOTHILL BLVD MKD (TE 399)	BG 1251
BASELINE (1965)	738.213	CS MON 51FT S C/L FOOTHILL BLVD + 15FT E C/L DAISY AVE MKD (BM 10-8 1952 RE 63)	BG 1252
BASELINE (1965)	687.679	L+BN IN S CB FOOTHILL BLVD CTR CATCH BASIN FRONT OF BLDG NO 3600	BG 1254
BASELINE (1965)	692.032	L+BN 3FT W BCR @ SW COR ROSEMEAD BLVD + FOOTHILL BLVD	BG 1255
BASELINE (1965)	693.306	L+BN 40FT E BCR @ SE COR ROSEMEAD BLVD + FOOTHILL BLVD	BG 1256
BASELINE (1965)	687.120	L+SPK 6FT S BCR @ SW COR QUIGLEY AVE + FOOTHILL BLVD	BG 1257
BASELINE (1965)	677.014	CS MON NE COR FOOTHILL BLVD + MICHILLINDA AVE 74FT N + 45FT E C/L INT MKD (BM 10-10)	BG 1258
BASELINE (1965)	673.992	L+SPK 6FT S BCR @ SE COR MICHILLINDA AVE + FOOTHILL BLVD	BG 1259
ARCADIA (1965)	662.195	L+T NR CTR CB RET @ NW COR MICHILLINDA AVE + ARBOLEDA ST	BG 1260
ARCADIA (1965)	653.835	L+T NR CTR CB RET @ SW COR SIERRA GRANDE ST + MICHILLINDA AVE	BG 1261
ARCADIA (1965)	651.433	L+T W CB MICHILLINDA AVE 28FT S OF S RAIL SFRR + 150FT N COLORADO ST	BG 1262
ARCADIA (1965)	643.736	L+SPK 36FT W BCR @ NW COR COLORADO ST + MICHILLINDA AVE	BG 1263
ARCADIA (1965)	640.591	L+SPK 5FT S BCR @ SW COR COLORADO ST + MICHILLINDA AVE	BG 1264
ARCADIA (1965)	632.429	L+T W CB MICHILLINDA AVE 20FT N OF DR TO HSE NO 25 + 350FT S COLORADO ST	BG 1265
ARCADIA (1965)	622.559	SPK W CB MICHILLINDA AVE 10FT S C/L PROD MONTE VERDE DR	BG 1267
ARCADIA (1965)	613.567	L+BN IN W CB MICHILLINDA AVE 1FT N CB RET @ NW COR BLANCHE AVE 20FT W + 34FT N C/L INT	BG 1269
ARCADIA (1965)	492.609	CS MON IN WELL 8IN DN 1FT BACK OF CB FACE OF BALDWIN AVE 35FT E C/L + 103FT N C/L HUNTINGTON DR (N BARREL) MKD (BM 20-6 1952 RE 63)	BG 1691

QUAD-YEAR	ELEV	DESCRIPTION (INCLUDE QUAD AND YEAR IN DESCRIPTION)	BM NUMBER
ARCADIA (1965)	494.216	L+BRAD NR CTR 36FT N C/L HUNTINGTON DR + 30FT W C/L BALDWIN AVE	BG 1692
ARCADIA (1965)	523.116	RDBM TAG N CB OF IS1 1FT W ANG PT 30FT S C/L HUNTINGTON DR + 50FT W C/L GOLDEN WEST AVE	BG 1693
ARCADIA (1965)	523.510	L+T N CB 3FT W BCR 30FT N C/L HUNTINGTON DR + 53FT W C/L GOLDEN WEST AVE	BG 1694
ARCADIA (1965)	551.871	BT SPK IN E CB 7FT N BCR 38 FT C/L MICHILLINDA AVE + 101FT N C/L HUNTINGTON DR MKD (TE 435)	BG 1695
ARCADIA (1965)	550.333	CS MON IN WELL 11IN DN 1FT BACK OF CB @ BCR @ NW COR HUNTINGTON DR + MICHILLINDA AVE MKD (BM 20-7)	BG 1696
ARCADIA (1965)	562.139	CS MON IN WELL 8 IN DN C/L ROSEMEAD BLVD 10FT S C/L HUNTINGTON DR	BG 1697
ARCADIA (1965)	563.442	SQ HD SPK W CB 45FT N BCR 85FT N C/L HUNTINGTON DR N + 45FT W C/L ROSEMEAD BLVD MKD (SD 809)	BG 1698
ARCADIA (1965)	569.978	L+SPK W CB 4FT N BCR 64FT N C/L HUNTINGTON DR + 20FT W C/L MADRE ST	BG 1700
ARCADIA (1965)	587.542	BT SPK W CB 1FT S CATCH BASIN 20FT W C/L LA PRESA DR + 50FT N C/L HUNTINGTON DR MKD (TE 637)	BG 1702
BASELINE (1965)	321.998	CS MON IN WELL 9IN DN @ SE COR PECK RD + LOWER AZUSA RD 1FT BACK OF CB FACE + 47FT E + 63FT S C/L INT MKD (BM 15-4)	BG 2327
BASELINE (1965)	329.935	CS MON 50FT E C/L PECK RD + 47FT S C/L CHERRYLEE DR MKD (LOT 7)	BG 2328
BASELINE (1965)	336.864	L+T CONC PORCH OF BLDG @ SW COR PECK RD + RIO HONDO PKWY 147FT S + 78FT W C/L INT MKD (BM)	BG 2329
BASELINE (1965)	338.435	FC MON IN N END OF CB ON BRIDGE NO 8 1270 40FT W C/L PECK RD + 1000FT N CLARK ST MKD (BM 67-75)	BG 2332
BASELINE (1965)	339.136	RDBM TAG CONC WALL OF WASH @ NE COR BRIDGE NO B1270 5FT E CB + 45FT E C/L PECK RD + 1000FT N CLARK ST	BG 2333
BASELINE (1965)	357.353	RD MON IN WELL 6IN DN @ INT MYRTLE AVE + LONGDEN AVE	BG 2336
BASELINE (1965)	364.152	L+T E CB MYRTLE AVE 40FT E C/L + 37FT S BCR OF ISL + 66FT S C/L CALIFORNIA AVE EXIT	BG 2337
BASELINE (1965)	365.065	FC TAG W CB MYRTLE AVE 40FT W C/L + 1FT S CATCH BASIN + 46FT N OF CALIFORNIA AVE EXIT	BG 2338
BASELINE (1965)	666.818	PK N CB 1FT± E BCR @ NE COR FOOTHILL BLVD + DEXTER AVE 30FT± N + 50FT± E C/L INT	BG 2494
BASELINE (1965)	670.132	L+BN E CB 1FT± S BCR @ NE COR FOOTHILL BLVD SERVICE RD + DEXTER AVE 100FT± N + 20FT± E C/L INT MKD (BM)	BG 2495
BASELINE (1965)	654.527	L+BN N CB 2FT± W BCR @ NW COR FOOTHILL BLVD + N SERVICE RD 30FT± N + 36FT± W C/L INT MKD (BM)	BG 2496
BASELINE (1965)	654.406	L+T N CB 8FT± E BCR @ NE COR FOOTHILL BLVD + N SERVICE RD 30FT± N + 37FT± E C/L INT	BG 2497
BASELINE (1965)	635.719	L+T N CB 1FT± W BCR @ NW COR FOOTHILL BLVD + BALDWIN AVE 30FT± N + 51FT± W C/L INT	BG 2498

QUAD-YEAR	ELEV	DESCRIPTION (INCLUDE QUAD AND YEAR IN DESCRIPTION)	BM NUMBER
BASELINE (1965)	635.544	FC MON FLUSH W/CB ON NW COR DRWY ON NW COR FOOTHILL BLVD + BALDWIN AVE 30FT±N + 100FT±W C/L INT MKD (BM 62 76)	BG 2499
BASELINE (1965)	591.285	CS MON IN WELL 9IN DN 1FT± N C/L FOOTHILL BLVD + 70FT± E C/L BURNELL OAKS LANE MKD (SIERRA MADRE G 6 1940)	BG 2502
ARCADIA (1965)	589.190	L+BRAD IN N CB COLORADO BLVD ON C/L PROD BALDWIN AVE (OLD C/L)	BG 2503
ARCADIA (1965)	587.589	PK IN L E CB 2FT S BCR @ SE COR COLORADO BLVD + BALDWIN AVE 66FT S + 30FT E C/L INT	BG 2504
ARCADIA (1965)	566.395	SML BT SPK IN L N CB CAMBRIDGE DR 36FT E BCR @ NE COR BALDWIN AVE 100FT E + 18FT N C/L INT	BG 2505
BASELINE (1965)	308.488	FC BR CAP MON IN E ABUT @ NE COR OF LOWER AZUSA RD BRIDGE NO 81256 OVER RIO HONDO 32FT N C/L LOWER AZUSA RD + 0.3MI W TYLER AVE	BG 2506
BASELINE (1965)	306.869	RDBM TAG IN N CB LOWER AZUSA RD 3FT W NW COR OF LOWER AZUSA RD BRIDGE NO 81256 OVER RIO HONDO RIVER 25FT N C/L LOWER AZUSA RD + 0.3MI W TYLER AVE	BG 2507
BASELINE (1965)	302.777	CS BM MON IN WELL 17FT OUT LOWER AZUSA RD + 71FT E C/L EL MONTE AVE (BM 19-7 1952 RE 63)	BG 2508
BASELINE (1965)	313.667	CS MON IN WELL @ C/L INT LOWER AZUSA RD + TEMPLE CITY BLVD	BG 2509
ARCADIA (1965)	431.787	CS MON WELL @ C/L INT LOS TUNAS DR + SAN GABRIEL BLVD	BG 2510
ARCADIA (1965)	310.335	L+BN IN W CB OF ARROYO HIGH SCHOOL FOOTBALL FIELD PKNG LOT @ MOST NLY ENT 45FT E C/L TYLER AVE + 800FT N LOWER AZUSA RD	BG 2515
BASELINE (1965)	353.237	L+BN NR N EDGE OF CONC DRWY TO HSE NO 4471 BARTLETT AVE @ SW COR OF MISSION DR 25FT W + 55FT S C/L INT	BG 2517
BASELINE (1965)	354.997	CS MON IN WELL @ C/L INT MISSION DR + WALNUT GROVE AVE	BG 2518
BASELINE (1965)	357.893	L+T IN NCB MISSION DR 5FT E CB RET @ NE COR WILLARD AVE 30FT N + 40FT E C/L INT	BG 2519
BASELINE (1965)	364.749	FC BR CAP IN CONC ABUT @ NE COR OF MISSION DR BRIDGE NO 8189 OVER RUBIO WASH 30FT N C/L MISSION DR + 210FT E CHARLOTTE AVE MKD (BM 58-516)	BG 2520
BASELINE (1965)	353.760	FC BR CAP IN S END W WINGWALL OF BRIDGE NO 964 @ SE COR PECK RD + LIVE OAK ST 48FT S + 82FT E APPROX C/L INT MKD (67-76 1959)	BG 2637
BASELINE (1965)	386.800	L+SPK IN W CB 6FT S BCR 55FT S + 45FT W C/L INT E ALTERN ST + S MYRTLE AVE MKD (LE 85)	BG 2638
BASELINE (1965)	387.346	L+SPK S CB E ALTERN ST 10FT E BCR 20FT S + 79FT E C/L INT S MYRTLE AVE + E ALTERN ST	BG 2639
BASELINE (1965)	432.055	L+T E CB 15FT N BCR 75FT S + 43FT E C/L INT DUARTE RD + S MYRTLE AVE	BG 2640
BASELINE (1965)	437.616	L+T E CB S MYRTLE AVE 24FT S BCR 54FT N + 29FT E C/L INT DUARTE RD + S MYRTLE AVE	BG 2641

QUAD-YEAR	ELEV	DESCRIPTION (INCLUDE QUAD AND YEAR IN DESCRIPTION)	BM NUMBER
BASELINE (1965)	499.528	CE MON FLUSH IN WLK BACK OF CB 30FT E BCR @ SE COR HUNTINGTON DR + MYRTLE AVE 126FT E + 36FT S C/L INT MKD (11-10A RE 5869 CE)	BG 2642
BASELINE (1965)	332.125	CS MON C/L MISSION OUT 50FT W C/L ROSEMEAD BLVD	BG 3028
BASELINE (1965)	336.175	L+T E CB 8FT S BCR @ SE COR ROSEMEAD BLVD + LOWER AZUSA RD 50FT S + 40FT E C/L INT	BG 3029
BASELINE (1965)	316.137	RDBM TAG S CB 1FT W BCR @ SE COR LOWER AZUSA RD + TYLER AVE 63FT E + 31FT S C/L INT OUT	BG 3031
BASELINE (1965)	318.652	RD BM TAG N CB 1FT W BCR @ NW COR LOWER AZUSA RD + CEDAR AVE 35FT W + 28FT N C/L INT	BG 3032
BASELINE (1965)	320.321	L+SPK S CB @ SE COR LOWER AZUSA RD + EL ROVIA AVE 75FT E + 28FT S C/L INT	BG 3033
ARCADIA (1965)	383.991	L+T E CB 10FT S BCR @ SE COR SAN GABRIEL BLVD + EL MONTE ST 40FT S + 38FT E C/L INT	BG 3040
ARCADIA (1965)	385.664	L+T W CB 5FT N BCR @ NW COR SAN GABRIEL BLVD + EL MONTE ST 40FT N + 18FT W C/L INT OUT	BG 3041
ARCADIA (1965)	405.557	L+BN E CB 11FT S BCR @ SE COR SAN GABRIEL BLVD + BROADWAY 41FT S + 35FT E C/L INT	BG 3042
ARCADIA (1965)	406.374	L+T W CB 12FT N BCR @ NW COR SAN GABRIEL BLVD + BROADWAY 42FT N + 35FT W C/L INT	BG 3043
ARCADIA (1965)	412.521	BR DISK IN NW ABUT BR OVER RUBIO WASH + SAN GAB RIEL BLVD	BG 3044
ARCADIA (1965)	431.726	CS MON @ APPROX C/L LAS TUNAS DR + S SAN GABRIEL BLVD	BG 3045
ARCADIA (1965)	447.524	RD MON @ C/L INT SAN GABRIEL BLVD + HERMOSA DR	BG 3046
ARCADIA (1965)	553.276	CS MON @ INT ROSE AVE + SAN GABRIEL BLVD	BG 3047
ARCADIA (1965)	553.420	CS MON 59FT NLY INT ROSE AVE + 8FT ELY FROM PROD SAN GABRIEL BLVD	BG 3048
ARCADIA (1965)	598.026	L+BN S CB 60FT W BCR @ SW COR SAN GABRIEL BLVD + HUNTINGTON DR	BG 3049
ARCADIA (1965)	597.610	L+BN N CB 25FT E BCR @ NE COR SAN GABRIEL BLVD + HUNTINGTON DR	BG 3050
ARCADIA (1965)	651.132	CS MON @ NW COR SAN GABRIEL BLVD + LOMBARDY RD 50FT S + 25FT W C/L INT	BG 3051
ARCADIA (1965)	653.303	BT SPK E CB 5FT N BCR @ NW COR SAN GABRIEL BLVD + LOMBARDY RD 35FT N + 25FT E C/L INT	BG 3052
BASELINE (1965)	661.309	SPK E CB 6FT S BCR @ SE COR SAN GABRIEL BLVD + CALIFORNIA AVE 55FT S + 30FT E C/L INT	BG 3053
BASELINE (1965)	692.067	CS MON @ SE COR SAN GABRIEL BLVD + DEL MAR BLVD 53FT E + 15FT S C/L INT OUT	BG 3054
BASELINE (1965)	719.040	L+T CTR CB RET @ SE COR SAN GABRIEL BLVD + COLORADO BLVD OUT	BG 3055
BASELINE (1965)	721.381	SPK CTR CB RET @ NW COR SAN GABRIEL BLVD + COLORADO BLVD	BG 3056

QUAD-YEAR	ELEV	DESCRIPTION (INCLUDE QUAD AND YEAR IN DESCRIPTION)	BM NUMBER
BASELINE (1965)	727.899	SPK 5FT E BCR @ SE COR DAISY AVE + WALNUT AVE 35FT E + 25FT S C/L INT	BG 3057
BASELINE (1965)	635.357	CS MON IN ISLAND @ NE COR FOOTHILL BLVD + BALDWIN AVE 45FT N + 33FT E C/L INT	BG 3058
BASELINE (1965)	613.272	RAMSET S CB 5FT W C/L PROD ARBOLADA DR + 30FT S C/L FOOTHILL BLVD	BG 3059
BASELINE (1965)	556.926	RAMSET 1FT S BCR @ SW COR FOOTHILL BLVD + RANCHO RD 55FT S + 17FT W C/L INT	BG 3060
BASELINE (1965)	543.055	CS MON C/L FOOTHILL BLVD 10FT E C/L SANTA ANITA AVE	BG 3061
ARCADIA (1965)	539.284	BR DISK OVER NE ABUT OF BR ON FOOTHILL BLVD OVER SANTA ANITA WASH MKD (53 K)	BG 3062
ARCADIA (1965)	510.144	L+T CTR CB RET @ SE COR FOOTHILL BLVD + FIFTH ST	BG 3063
ARCADIA (1965)	507.292	CS MON ON C/L FOOTHILL BLVD + 50FT E C/L MC KINLEY PL MKD (K 6 A)	BG 3064
ARCADIA (1965)	548.184	CS MON 50FT E + 6FT N C/L INT FOOTHILL BLVD + MAYFLOWER AVE	BG 3065
ARCADIA (1965)	546.939	CS MON FL WITH SIDEWALK @ SW COR FOOTHILL BLVD + MAYFLOWER AVE 30FT W + 35FT S C/L INT	BG 3066
BASELINE (1965)	576.065	SPK 5FT W BCR @ NW COR FOOTHILL BLVD + MYRTLE AVE 45FT W + 30FT N C/L INT	BG 3067
BASELINE (1965)	576.432	L+T CTR CB RET @ SE COR FOOTHILL BLVD + MYRTLE AVE	BG 3068
BASELINE (1965)	554.807	L+T CTR CB RET @ SE COR MYRTLE AVE + LIME AVE	BG 3069
BASELINE (1965)	517.887	L+T CTR CB RET @ NE COR MYRTLE AVE + CHESTNUT AV	BG 3070
BASELINE (1965)	500.122	RAMSET CTR CB RET @ NE COR MYRTLE AVE + HUNTINGTON DR	BG 3071
BASELINE (1965)	470.464	L+T 5FT N BCR @ NW COR MYRTLE AVE + MONTANA AVE 35FT N + 30FT W C/L INT	BG 3072
ARCADIA (1965)	430.127	USC+GS MON FL WITH TOP STEPS MAIN ENT TO SANTA FE SCHOOL @ SE COR JEFFREY RD + PECK RD	BG 3073
ARCADIA (1965)	425.670	L+T CTR CB RET @ SE COR PECK RD + DUARTE RD	BG 3074
ARCADIA (1965)	402.970	L+T 1FT S BCR @ NW COR PECK RD + CHULA ST 40FT N + 20FT W C/L INT	BG 3075
ARCADIA (1965)	380.097	CS MON 51FT E + 23FT S C/L INT PECK RD + CAMINO REAL	BG 3076
ARCADIA (1965)	381.225	L+T 3FT E BCR @ SE COR PECK RD + CAMINO REAL 54FT E + 25FT S C/L INT	BG 3077
ARCADIA (1965)	368.186	L+T E CB PECK RD 10FT N C/L PROD OF JEFFRES AVE	BG 3078
ARCADIA (1965)	342.792	L+T 5FT W BCR @ SW COR LIVE OAK AVE + TYLER AVE 57FT W + 38FT S C/L INT	BG 3079

QUAD-YEAR	ELEV	DESCRIPTION (INCLUDE QUAD AND YEAR IN DESCRIPTION)	BM NUMBER
ARCADIA (1965)	373.772	L+BN 8FT S BCR @ SW COR LIVE OAK + BALDWIN AVE 50FT S + 40FT W C/L INT	BG 3080
ARCADIA (1965)	385.473	L+T CBR CB @ NE COR LIVE OAK AVE + ENCINITA AVE 40FT E + 20FT N C/L INT	BG 3081
ARCADIA (1965)	594.794	L+T N CB COLORADO BLVD ON C/L PROD BALDWIN AVE TO N 10FT E OF L+T APPROX 500FT E OF SANTA ANITA STA	BG 3082
ARCADIA (1965)	502.430	L+T 2FT S BCR @ SW COR BALDWIN AVE + HUGO RIED DR 50FT S + 27FT W C/L INT	BG 3083
ARCADIA (1965)	328.200	FC BR CAP MON CTR CB RET SE COR EL MONTE AVE + FREER ST MKD (BM 62-54)	BG 3085
ARCADIA (1965)	422.405	SPK 5FT W BCR @ NW COR LAS TUNAS DR + BURTON AVE	BG 3086
ARCADIA (1965)	417.894	SPK 15FT E BCR @ NE COR LAS TUNAS DR + MUSCATEL AVE	BG 3087
ARCADIA (1965)	386.004	L+BRAD 1FT N BCR @ ^W NZ COR E CLANTON ST + WALNUT- GROVE AVE 50FT N + 20FT ^W C/L INT	BG 3088
ARCADIA (1965)	385.273	L+T 1FT S BCR @ SW COR E CLANTON ST + WALNUT GROVE AVE 50FT S + 20FT W C/L INT	BG 3089
ARCADIA (1965)	371.472	L+T 5FT E BCR @ SE COR GRAND AVE + WALNUT GROVE 65FT E + 20FT S C/L INT	BG 3090
ARCADIA (1965)	583.103	SPK W CB MICHILLINDA AVE 5FT N C/L PROD HUGO RIED DR MKD (TE 431)	BG 3091
ARCADIA (1965)	560.511	SPK 9FT N BCR @ NW COR MICHILLINDA AVE + CALIFORNIA BLVD MKD (TE 432)	BG 3092
BASELINE (1965)	714.080	MON IN WELL + COVER 1FT E OF E CB @ NE COR 82FT N C/L INT SIERRA MADRE VILLA AVE + FOOTHILL BLVD MKD (BM-10-9A RE 5869-1962)	BG 3094